

REUNION



REUNION PITCH DECK

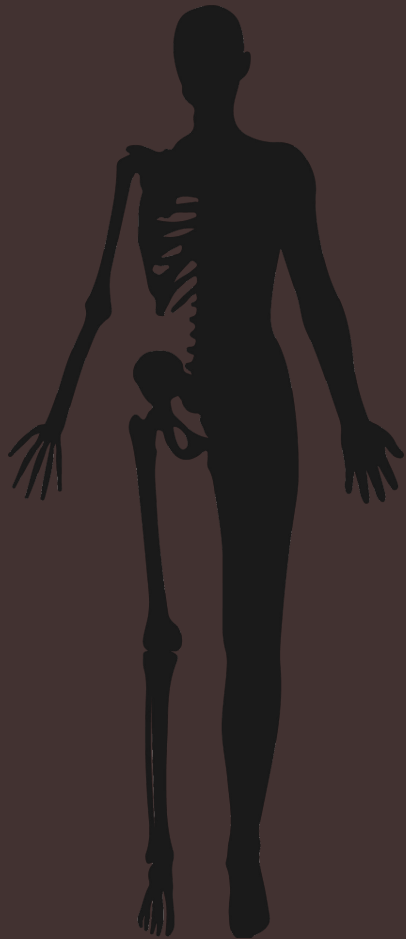


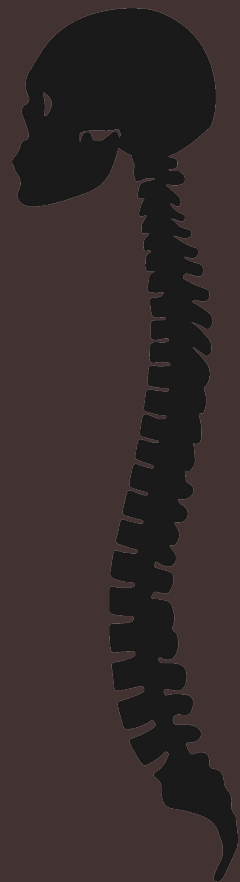
TABLE OF CONTENTS

FILMMAKER'S STATEMENT	3
STORY	4
PREVIOUS WORK	5
PRODUCTION TEAM BIOS	6-12
CHARACTER BREAKDOWNS	13-18
CINEMATOGRAPHY	20-24
MOOD REEL	25

FILMMAKER'S STATEMENT

REUNION delves into the deepest parts of grief and the lengths to which we'll go for closure. It's a story about the unchangeable and the unforgivable, where actions can't be undone, and decisions can't be unmade. The film follows two sisters, one alive and one dead, and the desperate measures the living sister takes to bring her loved one back from the grave. But it's not just about resurrection; it's about confronting the women responsible for her sister's death and the terror that ensues when the past catches up with them. Death is permanent and final, but this film is ultimately about choice. We ask the questions: are we in control of our lives, or do some choices seal our fate? What do we owe our parents, our friends, ourselves? How does the weight of suffering, in loss or guilt, affect us? What is the cost of guilt, and how do we let go? How does the obsession of getting back what we once had destroy us? Join us on this emotional journey as we explore the power of choice in life, death, and the spaces in between.

-- JOHN LIANG Director/Producer

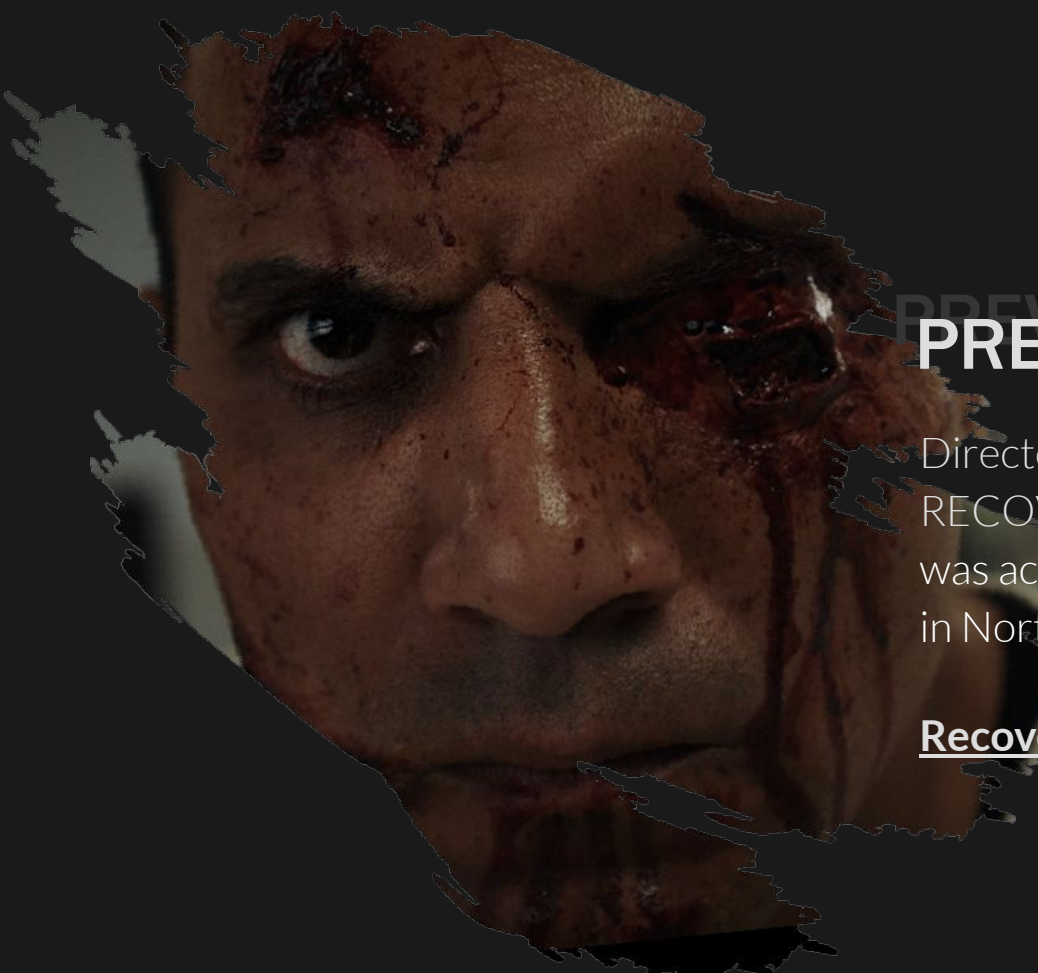




STORY

Ten years after a tragic accident, Izzy, Lauren, and Michelle are invited to commemorate the death of their friend, Ava, by her twin sister, Asia. The accident, however, is not what it seems. Years ago, Izzy, Lauren, and Michelle hit Ava with their car and left her for dead to avoid getting in trouble, never taking the blame for her death. The reunion organized by Asia, takes a sinister turn when she reveals her obsession with witchcraft and necromancy, and forces her friends to take part in a ritual to resurrect her dead sister.

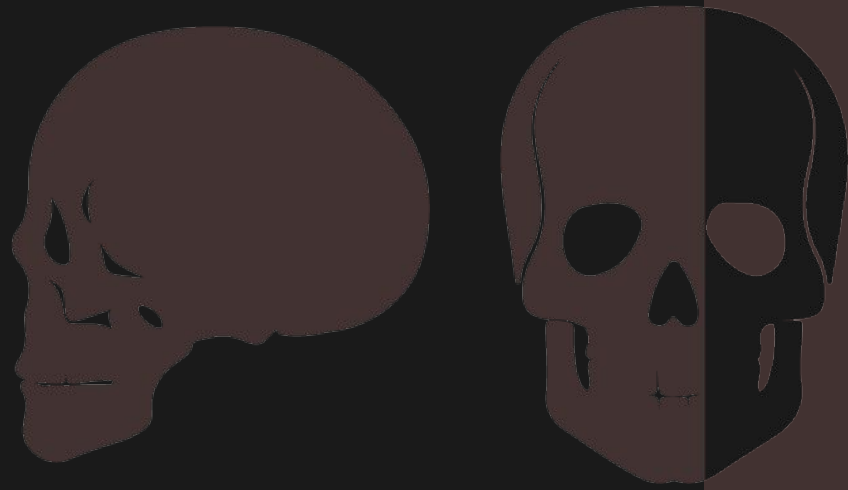
Asia drugs her friends and poisons her adopted daughter so that Ava's soul can inhabit her body. As the ritual progresses, resurrected Ava reveals to Asia that she was hit and left for dead by her friends, causing Asia to go into a rage, hunting down Izzy, Lauren, and Michelle– looking to avenge her sister. In the chaos, Lauren kills the resurrected Ava, but is killed by Asia. Michelle and Izzy hide and prepare to defend themselves against Asia and her dark magic husband, Samuel, as they raise new corpses in the ritual. Izzy and Asia engage in a final fight, which is interrupted by Izzy's husband, Ethan, when he arrives to check on Izzy. Although Asia wounds Ethan, Izzy manages to kill her before rushing Ethan to the hospital. As the film ends, we see Ethan possessed by Ava's spirit.



PREVIOUS WORK

Director John Liang's previous project, RECOVERY (2019), a psychological thriller, was acquired by SP Releasing and distributed in North America in 2019.

[Recovery Trailer](#)



PRODUCTION TEAM BIOS



JOHN LIANG DIRECTOR | CO-WRITER | PRODUCER

John Liang is a Chinese-American filmmaker from Chicago who graduated with honors from NYU's Tisch School of the Arts. While working as a writer for the Onion in New York, he directed several short films and worked as an associate producer for the independent drama *ANIMALS* (2014). He later relocated to Los Angeles where he made his feature film debut as the co-writer and director of *RECOVERY* (2019), a psychological thriller that takes place in a women's drug rehab center. The film was released online and on DVD in 2019. Shortly after, in the fall of 2019, John Liang started Lonely Devil Films, a film production company exploring modern American life through the lens of genre filmmaking.

Liang's second feature film, *REUNION*, will be his second collaboration with Pigrat Productions.



ALYSSA RADMAND DEVINE PRODUCER

Alyssa Radmand Devine is an Iranian-American film producer who has produced several feature films, including POR SOFIA (2016), PORTALS (2019), which is an anthology film from the creators of the V/H/S franchise featuring directors such as Eduardo Sanchez (Blair Witch Project), Timo Tjahjanto (Night Comes for Us) and Liam O'Donnell (Skylines). She also produced THE WORKOUT ROOM which was released for streaming on Peacock in 2022, and RECOVERY, which was her first collaboration with John Liang and released on streaming and DVD in 2019. In 2020, along with Griffin, she founded the Picture's Up! Film Festival in West Hollywood. This festival showcases short films made by young filmmakers. Alyssa is represented by Navigation Media Group.



GRIFFIN DEVINE PRODUCER | EDITOR

Griffin Devine is a producer and editor hailing from St. Louis, who works as one half of the PigRat Productions team. He has collaborated with his partner Alyssa Radmand Devine on several projects, including PORTALS and various short films that have been shown at festivals all over the world. Additionally, they have contributed to two films on Eli Roth's horror channel CRYPT TV. In 2018, their film CHOMPER was included in the Bloody Disgusting Selects anthology series. In 2019, Griffin worked as both a producer and editor on RECOVERY, collaborating with Liang.

In 2020, Griffin and Alyssa founded the Picture's Up! Film Festival in order to provide young filmmakers with a platform to showcase their work to industry professionals. Griffin is represented by Navigation Media Group.



RYAN BARNES CO-WRITER | PRODUCER

A graduate of New York University, Ryan Barnes is a screenwriter and musician born on Long Island, NY. This is his second project with John Liang, having previously scored Liang's debut feature, RECOVERY.



BIANCA GOODLOE ATTORNEY

Bianca Goodloe is a member of the California Bar Association, the New York Bar Association, and a Foreign Registered Advocate with the European Union. She has years of experience in film finance, entertainment law, and intellectual property, having previously worked in development and production. Having worked at the top global and magic circle law firms, Weil, Gotshal & Manges, LLP and Linklaters (in Prague, Berlin, and London), Ms. Goodloe founded the law practice Goodloe Law in 2003. She is also an adjunct professor at New York University and the University of California Los Angeles.



CHARACTER BREAKDOWNS



IZZY

Isabel, or “Izzy”, early 30s, is a professor at a prestigious university. But despite her professional success, she is deeply unhappy -- trapped in a loveless marriage to her husband Ethan and tormented by a secret she and her friends have been keeping from long ago.

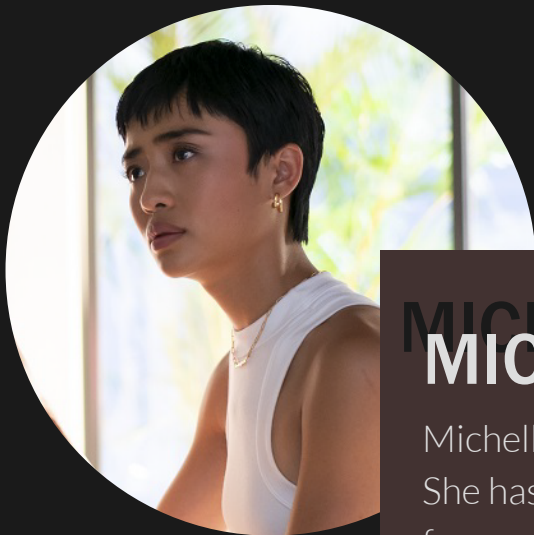




ASIA

Asia, early 30s, has never been the same since her twin sister Ava died ten years ago. She has become strange and her embrace of death-magic has warped and twisted her. She will do whatever it takes to bring Ava back to the realm of the living.

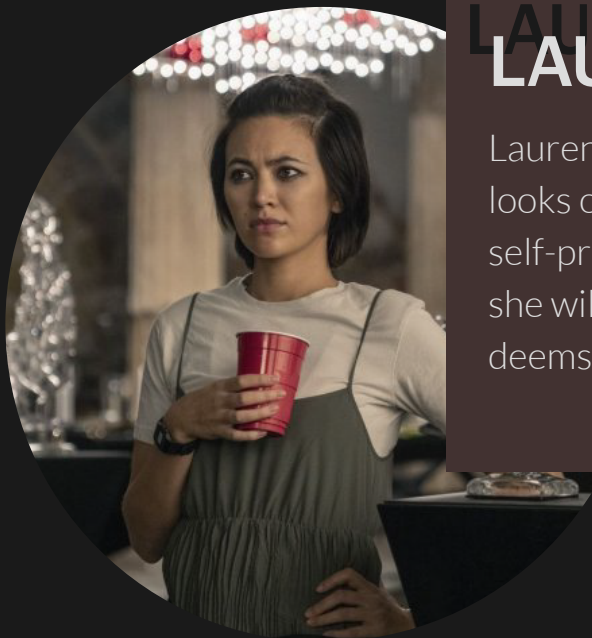




MICHELLE

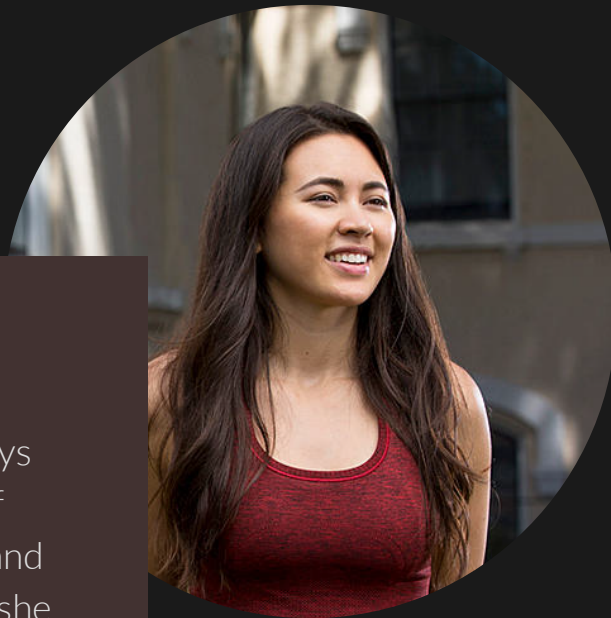
Michelle, early 30s, is a successful actor. She has a big personality and is outwardly funny and charismatic, but underneath her charm she also has a dark side.





LAUREN LAUREN

Lauren, early 30s, is a lawyer who always looks out for number one. Her sense of self-preservation is highly developed, and she will throw anyone under the bus if she deems them a threat to her or her interests.





SAMUEL

Samuel, 40s, is a powerful warlock and practitioner of death-magic. Strong and cunning, he is a man with a dark heart and a fierce devotion to his wife, Asia.





ETHAN

Ethan, early 30s, is Izzy's husband. A sad sack with little in the way of ambition or vigor, he and Izzy have been stuck in a loveless marriage for awhile now. His lack of passion for his wife extends to other areas, and he has no lust for life.





CINEMATOGRAPHY

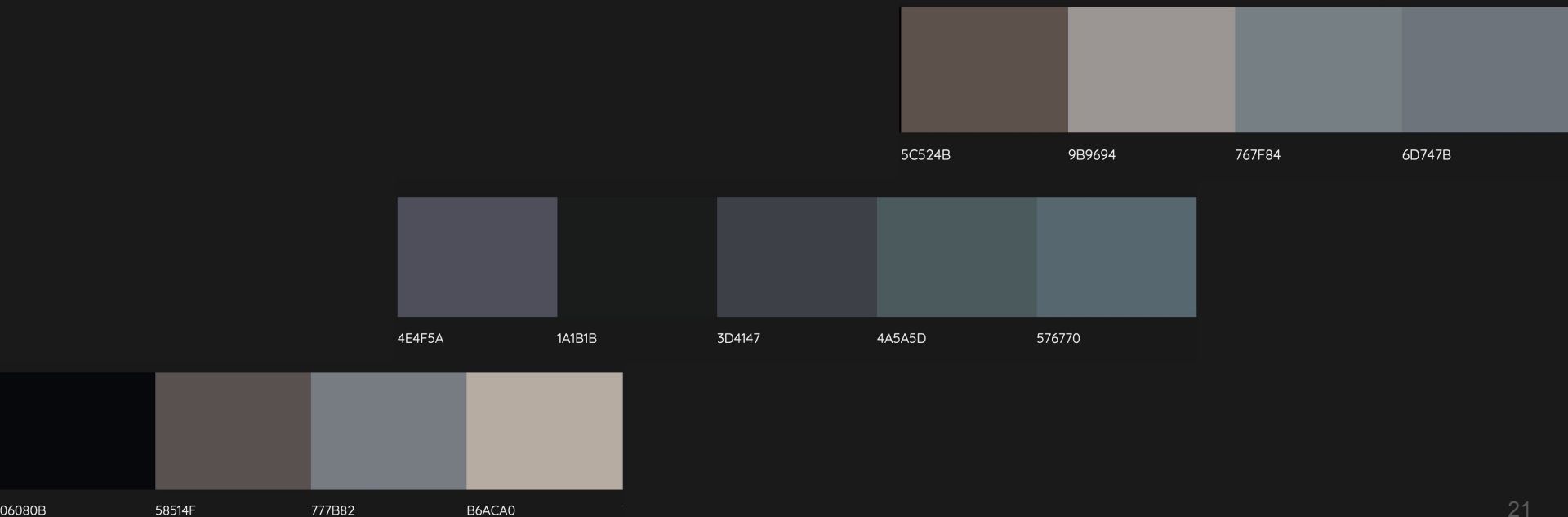
CAMERA/LIGHTING DESIGN

The film will have great contrasts in its lighting design, with scenes either plunged into shadowy darkness, or overly bright, with a harsh, almost over-exposed look.



VISUAL + PRODUCTION DESIGN

The film will have a muted and subdued color palette, mostly consisting of neutral colors such as black, white, blue and grey. It will reflect how none of the characters are truly alive, but are tethered to the world of the dead by their shared grief and secret.



PRODUCTION DESIGN REFERENCES

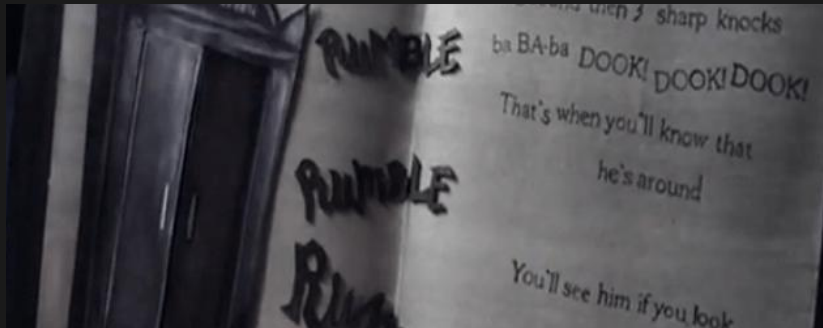
THE BABADOOK (2014)

Bleak color palette

Moody

Nightmare-ish

German expressionist



PRODUCTION DESIGN REFERENCES

THE PRODIGY (2019)

Subdued color palette

Cool greys + blues

Ominous



PRODUCTION DESIGN REFERENCES

THE WITCH (2015)

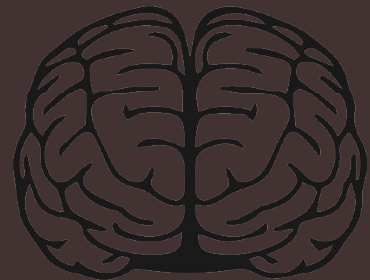
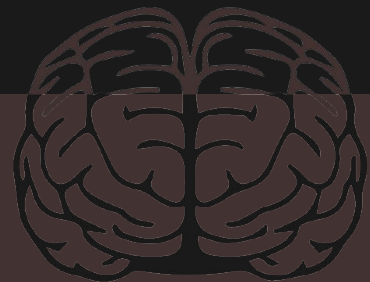
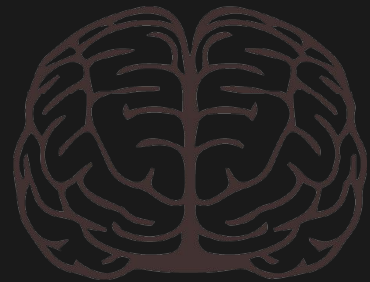
Gloomy
Candle lit
Shadowy
Surreal



MOOD REEL

REUNION is grief-ridden, chilling, and features a subdued atmosphere. The attached reel depicts and portrays the ambience that the final film will have.

REUNION Mood Reel



CONTACT

John Liang

john@lonelydevilfilms.com

lonelydevilfilms.com

